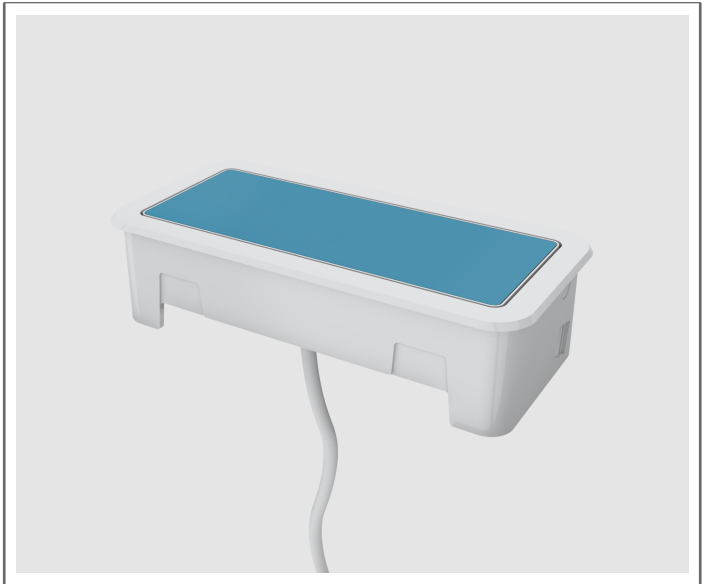




Front



Back

Nacre®

Product Number: BE03385-2-2-Q19-120

Specifications

Mounting Options:

Hole Mount

Power/Data Configuration:

1 Open Data / 2 Power / 1 Open Data*

Finish Options:

Gloss White

Cord Option:

120 Inches (Corded)

Custom Insert:

Molded Blue

Standard Product Details

320 Byrne Industrial Drive • Rockford, Michigan • 49341
Phone: 616.866.3461 • Fax: 616.866.3449 • <https://www.byrne.com/>



320 Byrne Industrial Drive • Rockford, Michigan • 49341
Phone: 616.866.3461 • Fax: 616.866.3449 • <https://www.byrne.com/>

4/19/2021

Product Number: BE03385-2-2-Q19-120



Subtle. Or sophisticated. Maybe even snazzy. But always so stylish. From felt to color and pattern. Nacre's customizable top - trimmed with a high-gloss plastic finish - is all about creative expression. And just below the surface, Nacre pops up to reveal a dynamic range of power, data and USB configurations - including the 2 port, 2 AMP per port, USB duplex that allows users to charge tablets or other USB-friendly electronics. Nacre is a member of the MyPower family, bringing customizability to a new level. Nacre is UL listed and is available in 15 AMP cord.

Standard Features:

- High gloss plastic finish.
- In-surface orientation for clean aesthetics.
- Removable top surface that [can be customized](#) for both business and personal purposes.
- Available 2amp USB duplex (1amp per port) ideal for charging two tablets and other USB friendly electronics.
- Various configurations of power, data and USB.
- Available with Byrne spill-proof simplexes
- Configurations with four or more power receive a Circuit Breaker Cord
- To learn more, go to mypower.byrne.com

Additional options are available. Don't see what you're looking for online? [Just give us a call.](#)

Have you heard about our Partner Platform? Click [here](#) to log in or sign up.

To order this product please reference the above product number and contact Byrne Customer Relations at 616.866.3449 or visit our website: <https://www.byrne.com/>

*Data cables for open ports are sold separately. [Click here to purchase.](#)

320 Byrne Industrial Drive • Rockford, Michigan • 49341
Phone: 616.866.3461 • Fax: 616.866.3449 • <https://www.byrne.com/>

