

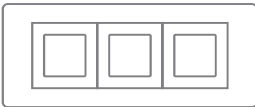
BYRNE

Axil[®] Hospital Grade

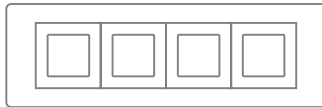


Sizes + Configurations

3 Port



4 Port



Finishes

Aluminum Housing

 Clear Anodized Aluminum

 Clear Anodized Aluminum

Plastic

 Black

 White

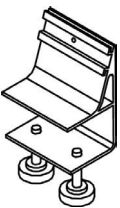
Cord Length

72"

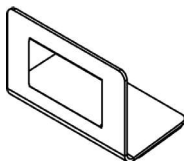
120"

Mounts

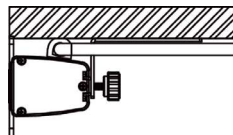
Edge Mount



Monument



Under Mount



Byrne has been designated by some of its customers as their supplier whose continued operation is necessary to enable, support, or facilitate the work of their critical infrastructure workers pursuant to Section 9 (b) of Michigan Executive Order 2020-21. Due to health and safety concerns, our hospital grade products and/or face shields may not be returned once opened. For any questions on returns of unopened products, please contact your Byrne Rep.