

INSTALLATION INSTRUCTIONS FOR INTERLINK IQ KIT

Install Interlink IQ
Power/Data Units
into work surface.

Reference
page 2-3

Light will be green when
unit is working

Interlink IQ
Control Box

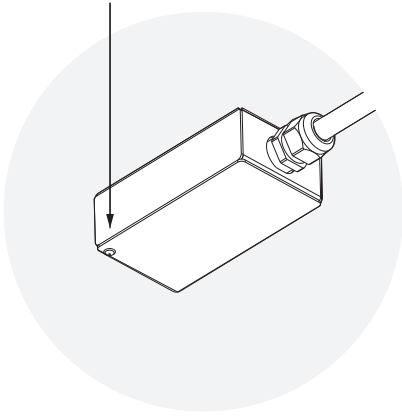
Snap to engage
or depress to disconnect

Interlink IQ
Control Box
Power Cord

Interlink IQ Control Box
can be secured to worksurface
by included industrial hook & loop.

Use included
clips to secure cords.

Interlink IQ Control Box Indicator Light

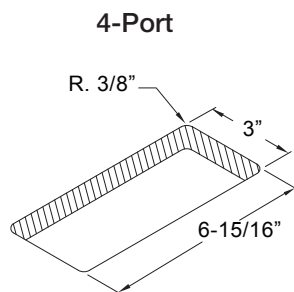
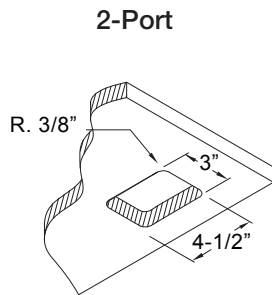


NOTE: The Interlink IQ System monitors for correct number of Units. Once connected to power, light on Interlink IQ Control box will be green. If more than 8 Interlink IQ Power/Data or By Pass Units are plugged into the Interlink Control Box, power will shut down and light will be red.

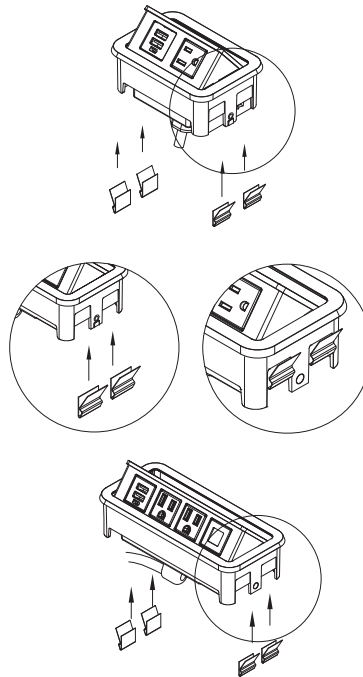
To reset, disconnect extra Unit(s) and unplug Interlink IQ Control Box from power for 15 seconds. Reconnect power to the Interlink IQ Control Box. The Indicator light should be green.

NOTE: If Interlink IQ System is overloaded, the circuit breaker will trip and will have to be reset.

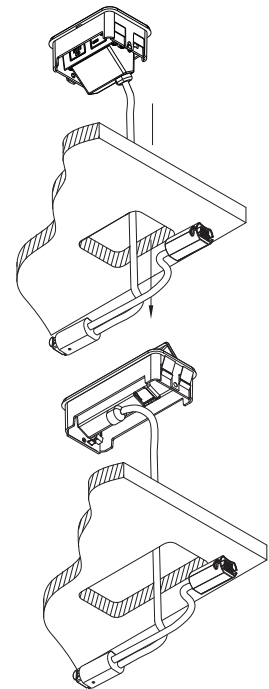
Nacre



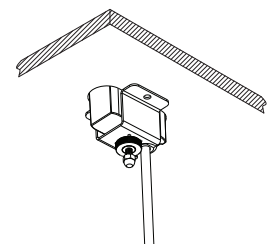
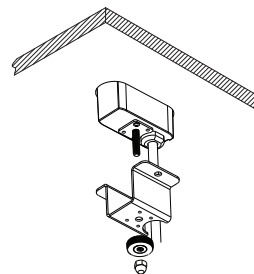
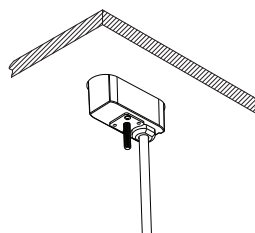
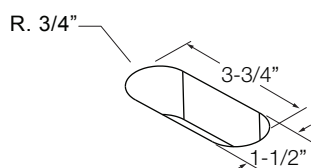
Cut out hole according to dimensions.



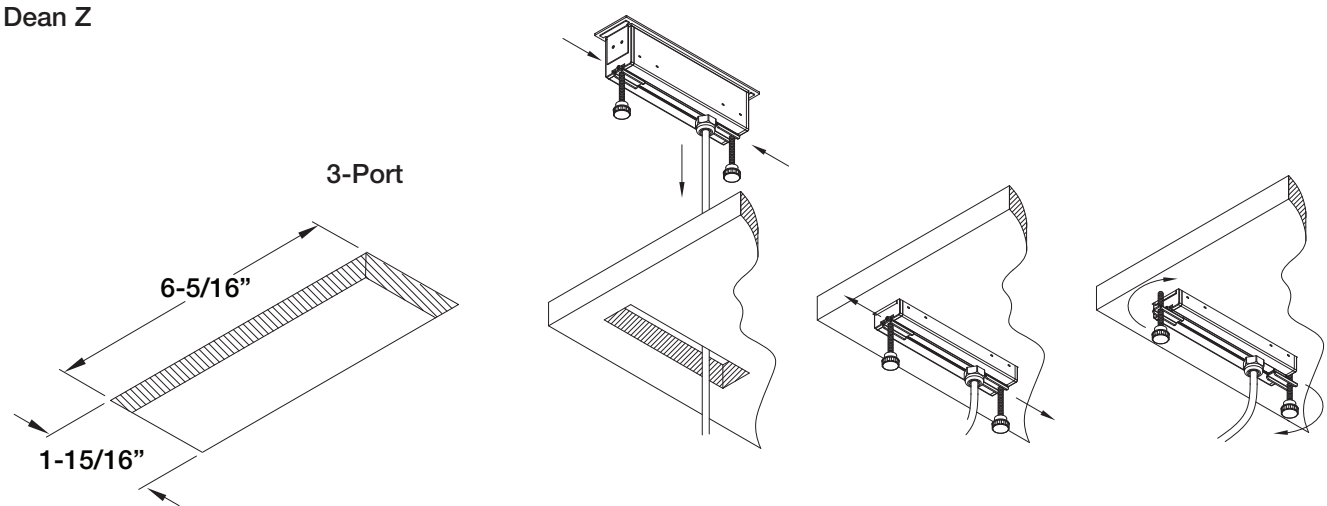
Attach 4 clips, two at each end of the base.



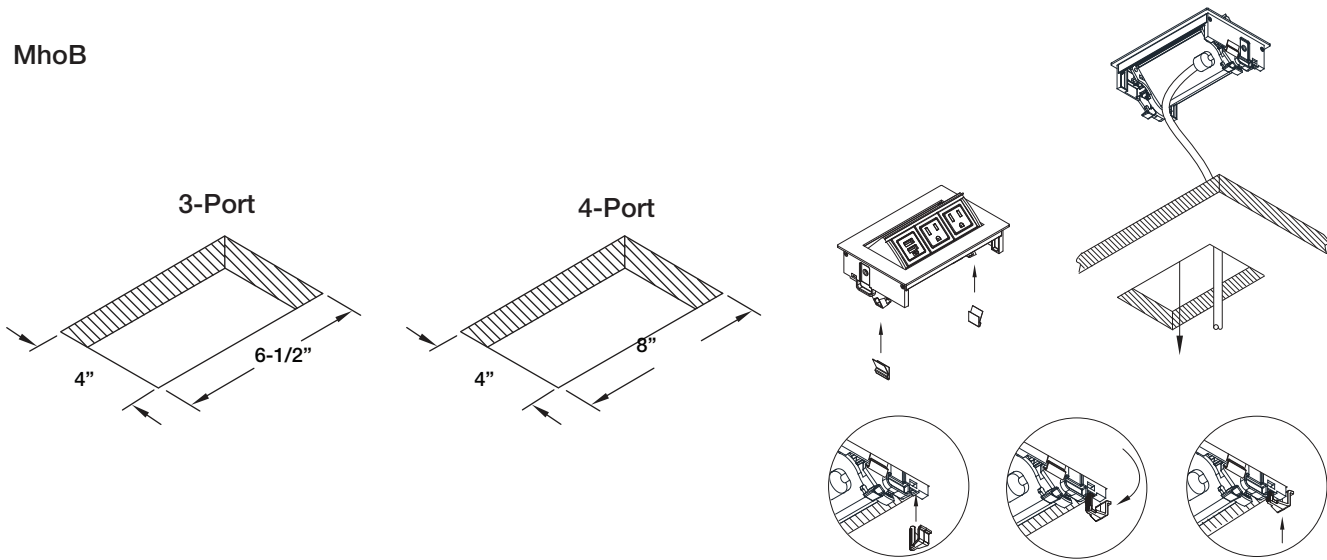
Kia



Dean Z



MhoB



ElloraB

